

DYKEM®

Brand

— **MARKERS**

— **LAYOUT FLUIDS**

— **STAINING COLORS**



The Mark of Excellence™

DYKEM® Highlights

From **STEEL BLUE®** to **BRITE-MARK®** *ITW DYKEM®* has a wide range of products for all of your marking needs. Constantly exploring new ways to color code, mark, outlast and out perform; we strive to create products that meet your demands. At the same time, we stand behind the quality and dependability you've come to appreciate through the years.

Products new to the catalog include: **TUFF GUY™** (pg. 9) – one of the toughest permanent ink markers available. **CROSS CHECK™** (pg. 21) provides a convenient visual method for identification of vibratory loosening or tampering in nuts, bolts, fasteners, and assemblies. **BRITE-MARK® H₂O** (pg. 4) is a general purpose water-based marker ideal for making clear, bold markings on almost any surface in environments where VOC issues and xylene use are a concern. **STRIKE-MARK™** (pg. 10) is a fast drying ink based permanent marker. **BLEED-THRU** (pg. 13) is ideal for fabricating structural steel or layout work where marks are required to bleed through a primer coat covering the marks.

Interested in increasing impulse sales? Take a look at our eye-catching **DYKEM® Pen Display** (p. 14) and **Blister Carded Markers** (pg. 4, 5). The Pen Display is a great tool for displaying all varieties of **DYKEM®** markers on a countertop. The Blister Carded markers are handy for individual sales of popular **DYKEM®** markers and hanging displays.

Want to learn more? We always welcome the chance to educate people further regarding our marking system lines. Please feel free to contact our customer service team at **1.800.443.9536** or **913.397.9889**. We'd love to hear from you!



Table of Contents

Paint Markers / Valve Action

BRITE-MARK® Paint Marker / Valve Action	3
BRITE-MARK® H ₂ O Water-Based Permanent Paint Marker ..	4

Steel Tip Paint Markers

TEXPEN® Industrial Paint Marker	5
DALO® Industrial Paint Marker	6

Temporary/Removable Markers

RINZ OFF® Water Removable Marker	7-8
SUDZ OFF® Detergent Removable Marker	7-8

Ink Markers

action marker® Ink Marker	11
STRIKE-MARK™ Fast Dry Ink Marker	10
TUFF GUY™ Heavy Duty Marker	9

Specialty Markers

BLEED-THRU	13
HIGH PURITY Marker	12
HIGH TEMPERATURE Marker	12
UV Marker.....	11

Merchandising

BRITE-MARK® Blister Carded Markers.....	4
Pen Counter Display Box	14
Pen Demo Kit	14
Pen Display	14
TEXPEN® Blister Carded Markers.....	5

Layout Fluids

STEEL BLUE® Layout Fluid	19
STEEL RED Layout Fluid	19

REMOVER & CLEANER

REMOVER & CLEANER	20
-------------------------	----

Specialty Products

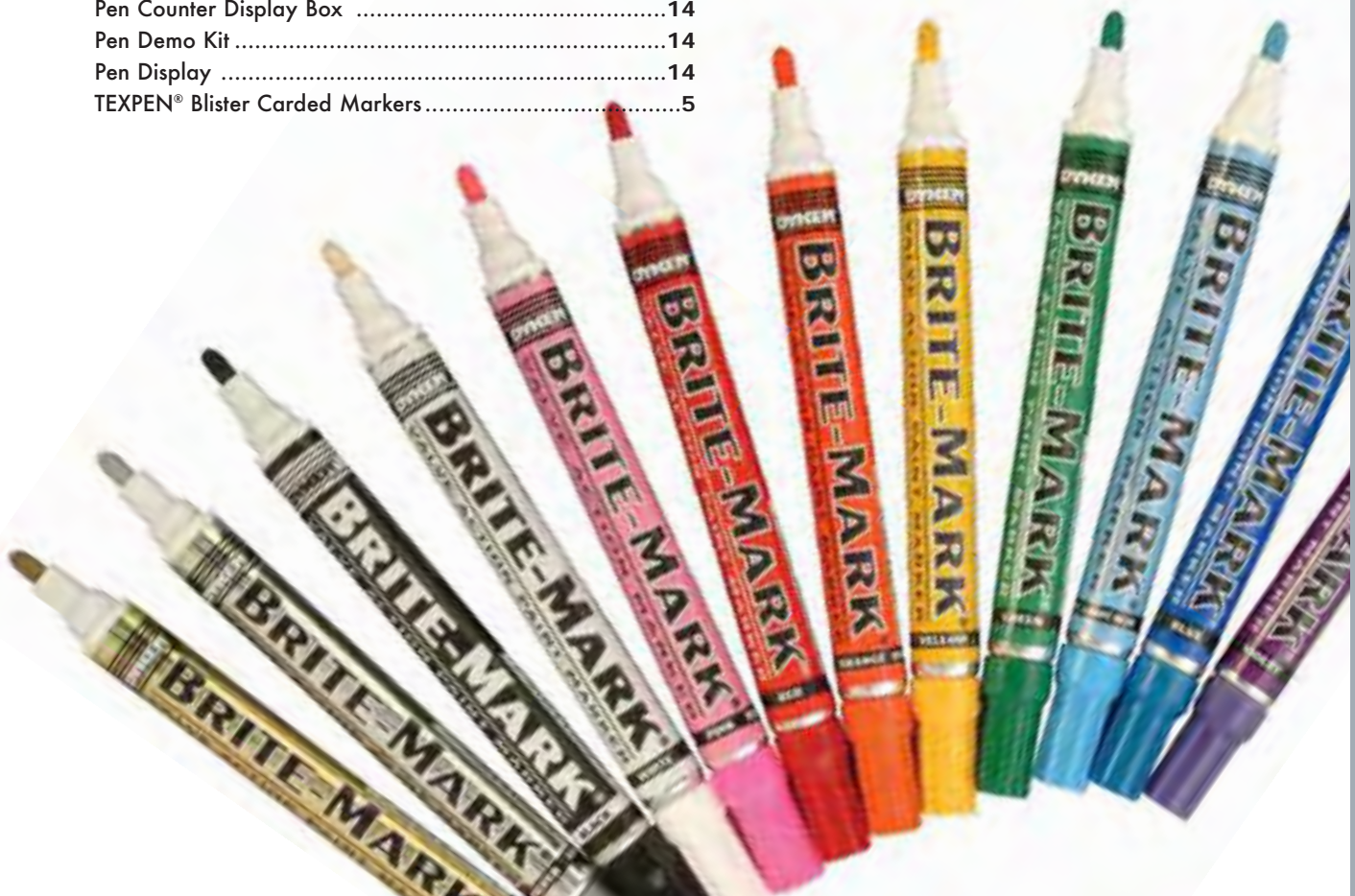
CLING SURFACE	16
CROSS CHECK™ Tamper Proof Torque Mark	21
Fountain Brush & Bottle	20
Hi-Spot Blue	21

Staining Colors

Fluorescent Stains	23-24
Opaque Stains	23-24
RINZ OFF® Temporary Water Removable Stains.....	23-24
SUDZ OFF® Temporary Detergent Removable Stains ..	23-24
Transparent Stains	23-24

Cleaners/Degreasers

NATURAL FORCE® Degreasing System	18
SCRUBS® Hand Cleaner Towels	17
Stainless Steel Cleaners	18



BRITE-MARK® PAINT MARKERS / VALVE ACTION

DYKEM® BRITE-MARK® is a general purpose permanent marker ideal for making clear, bold markings on almost any surface. Its quick drying, oil-based paint withstands indoor and outdoor conditions without fading, chipping or losing its opacity. DYKEM® BRITE-MARK® can be used to permanently identify inventory, assemblies, tools, finished products or work-in-progress while resisting most work related abuses or compounds.

BRITE-MARK® Medium

Our most popular marker, the BRITE-MARK® Medium, features a medium tip for clear, bold markings.

Available Colors/Product #'s:

Color	Part #	Color	Part #
Black	84002	Red	84006
Blue	84001	Silver	84050
Green	84007	White	84003
Gold	84051	Yellow	84004
Orange	84005	Pink	84009
Violet	84019	Lt. Blue	84008
Brown	84010	Lt. Green	84022

- Non-xylene based formula*
- Make permanent bright marks on metal, rubber, plastic, glass, concrete, leather, stone, wood, vinyl and more
- Valve action mechanism prevents paint in barrel from drying when cap is left off
- Heavy duty aluminum body with large paint capacity
- Ideal for color coding
- Bullet tips are replaceable to assure complete use of paint in each marker
- Drying Time:
25-35 seconds

* Excluding gold and silver

BRITE-MARK® 40

The BRITE-MARK® 40 contains a large capacity of paint in a heavy duty aluminum barrel. The clip cap screws on for secure closure and ensures the marker will not roll off surfaces. The threaded barrel allows the marker to be screwed into a jig or apparatus.

Available Colors/Product #'s:

Color	Part #	Color	Part #
Black	40003	Red	40002
Blue	40001	Silver	40016
Green	40004	White	40008
Gold	40014	Yellow	40006
Orange	40010	Pink	40009
Violet	40045	Brown	40007

BRITE-MARK® Fine

The BRITE-MARK® Fine marker may look small, but it's designed for the industrial environment. The fine tip allows for easy labeling of small parts and the matching clip cap makes it convenient to carry with you.

Available Colors/Product #'s:

Color	Part #	Color	Part #
Black	41003	Red	41002
Blue	41001	Silver	41016
Green	41004	White	41008
Gold	41014	Yellow	41006
Orange	41010	Violet	41045



BRITE-MARK® H₂O WATER-BASED PERMANENT MARKERS

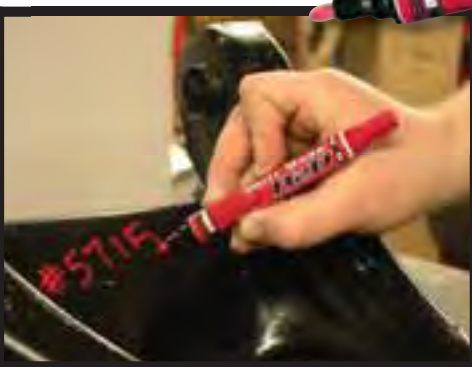
The DYKEM® BRITE-MARK® H₂O is a general purpose, water-based paint marker ideal for making clear, bold markings on almost any surface in environments where VOC and xylene issues are a concern.

The DYKEM® BRITE-MARK® H₂O can be used to permanently identify inventory, assemblies, tools, finished products, or works-in-progress while resisting most work related abuses or compounds.

- Non-xylene based formula
- Low Odor
- Low VOC
- Drying Time: 25 - 35 minutes
- Heavy Duty
- Vibrant Colors
- Excellent opacity

Available Colors/Product #'s:

Color	Part #	Color	Part #
Black	91426	White	91425
Blue	91603	Orange	91604
Green	91602	Red	91428
Yellow	91427		



BRITE-MARK® PAINT MARKERS / VALVE ACTION - BLISTER CARDED

Improve your DYKEM® merchandising by using Blister Carded BRITE-MARK® products. This convenient packaging makes for easier merchandising by allowing retailers to display individual markers versus setting out an entire box of markers when space is limited. Hang product on hooks, peg boards or clip strips.

- Attractive design showcases product to your customer
- Allows customer to purchase one marker at a time
- Helps control theft

Available Colors/Product #'s:

Color	Part #	Color	Part #
Black	84102	White	84103
Blue	84101	Orange	84105
Green	84107	Red	84106
Yellow	84104		



TEXPEN® INDUSTRIAL PAINT MARKERS

Perhaps the most rugged markers you'll ever use, the **DYKEM® TEXPEN®** Industrial Paint Marker gets the toughest jobs done. These markers easily write through oil, grease and even underwater. They feature a stainless steel-ball tip so you'll never have to worry about the tip wearing out before the paint is gone, even if you're writing on rough concrete or rusty metal. The thick, bold paint markings withstand extreme weather conditions without losing legibility or brightness.

- Available in 3 tip sizes
- Replaces bottle markers and tube-style markers
- Write sharp, defined, bright marks on any surface including metal, plastic, glass, concrete, rubber and more
- Stainless steel-ball tip will not need to be replaced
- Ergonomically correct marker enables you to mark at all angles, even upside down
- Heavy duty aluminum barrel retains its shape
- Paint flow is controlled by the pressure bulb at the end of the barrel
- Drying Time: 25 - 35 minutes

Available Colors/Product #'s:

Fine Tip

Color	Part #	Color	Part #
Black	16030	Red	16020
Blue	16010	White	16080
Green	16040	Orange	16100
Yellow	16060		

Medium Tip

Color	Part #	Color	Part #
Black	16033	Red	16023
Blue	16013	White	16083
Green	16043	Orange	16103
Yellow	16063		

Broad Tip

Color	Part #	Color	Part #
Black	16034	Red	16024
Blue	16014	White	16084
Green	16044	Orange	16104
Yellow	16064		



TEXPEN® INDUSTRIAL PAINT MARKERS - BLISTER CARDED

Improve your **DYKEM®** merchandising by using **Blister Carded TEXPEN®** products. This convenient packaging makes for easier merchandising by allowing retailers to display individual markers versus setting out an entire box of markers when space is limited. Hang product on hooks, peg boards or clip strips.

- Attractive design showcases product to your customer
- Allows customer to purchase one marker at a time
- Helps control theft

Available Colors/Product #'s:

Color	Part #	Color	Part #
Black	16038	White	16088
Blue	16018	Orange	16108
Green	16048	Red	16028
Yellow	16068		



DALO® INDUSTRIAL PAINT MARKERS

A larger version of the popular **TEXPEN®**, **DYKEM® DALO®** Industrial Paint Markers get the toughest jobs done. These markers easily write through oil, grease and even underwater.

The **DALO®** features a stainless steel-ball tip so you'll never have to worry about the tip wearing out before the paint is gone, even if you're writing on rough concrete or rusty metal. The thick, bold paint markings withstand extreme weather conditions without losing legibility or brightness.

- Available in 2 tip sizes.
- Replaces bottle markers and tube-style markers
- Write sharp, defined, bright marks on any surface including metal, plastic, glass, concrete, rubber and more
- Ergonomically correct marker enables you to mark at all angles, even upside down
- Marker retains its shape unlike tube-style markers
- Paint flow is controlled by the pressure bulb at the end of the barrel
- Drying Time: 25 - 35 minutes



Available Colors/Product #'s:

Medium Tip

Color	Part #	Color	Part #
Black	26033	Red	26023
Blue	26013	White	26083
Green	26043	Orange	26103
Yellow	26063		

Broad Tip

Color	Part #	Color	Part #
Black	26034	Red	26024
Blue	26014	White	26084
Green	26044	Orange	26104
Yellow	26064		

Temporary Ink Markers

Water Removable

or

Detergent Removable

- Reduce Waste
- Color Coding
- Part Assembly
- Quality Control
- Part Inspection
- Identification
- No "Ghosting"



RINZ OFF® WATER REMOVABLE TEMPORARY MARKERS

Ideal for quality control systems, the DYKEM® RINZ OFF® Water Removable Temporary Marker allows you to make a mark on untreated metal or glass and remove it with water; a solvent is not required. Marks made will rinse off with water and no ghosting or bleed-through will appear when painted over.*

The soft, fiber tip ensures the surface of the metal will not be scratched or marred and can easily be replaced until the marker runs out of ink. The RINZ OFF® 44 features a clip-on cap and a threaded barrel so it can be screwed into a jig or apparatus.

- Available in 2 barrel sizes
- Non-xylene based formula
- Ideal for quality control, part assembly, identification, part inspection and more
- Color code for different operators/shifts, parts placement or reject/accept
- No ghosting or bleed-through of removed mark when painted over*
- Will not react with paint systems
- Drying time: 45 seconds - 1 minute

Available Colors/Product #'s:

Medium			Broad (44)			1 Gallon		
	Black	91109		Black	44109		Black	—
	Blue	91105		Blue	44105		Blue	82105
	Green	91108		Green	44108		Green	82108
	Red	91106		Red	44106		Red	82106
	Yellow	91757		Yellow	44757		Yellow	—
	White	—		White	44709		White	—

*Always test to determine suitability
^See page 24 for information on RINZ OFF® Stains



SUDZ OFF® DETERGENT REMOVABLE TEMPORARY MARKERS

Ideal for quality control systems demanding a durable, temporary marking system. The DYKEM® SUDZ OFF® Detergent Removable Temporary Marker allows you to make a mark on untreated metal or glass and remove it using an alkaline detergent with a pH level of 10 or above; a solvent is not required.

Marks made will not ghost or bleed-through when painted over*. The soft, fiber tip ensures the surface of the metal will not be scratched or marred and can easily be replaced until the marker runs out of ink.

The SUDZ OFF® 44 features a clip-on cap and a threaded barrel so it can be screwed into a jig or apparatus.

- Available in 2 barrel sizes
- Non-xylene based formula
- No ghosting or bleed-through of removed mark when painted over*
- Ideal for quality control, part assembly, identification, part inspection and more
- Color code for different operators/shifts, parts placement or reject/accept
- Will not react with paint systems*
- Drying Time: 45 seconds - 1 minute

*Always test to determine suitability

^See page 24 for information on SUDZ OFF® Stains

Available Colors/Product #'s:

Medium			Broad (44)			1 Gallon		
	Black	91985		Black	44985		Black	—
	Blue	91938		Blue	44938		Blue	82938
	Green	91371		Green	44371		Green	82371
	Red	91939		Red	44939		Red	82939
	Yellow	91694		Yellow	44694		Yellow	—
	White	91146		White	44146		White	—

TUFF GUY™ HEAVY DUTY INK MARKER

DYKEM® TUFF GUY™ is a heavy duty, truly permanent ink marker. This valve action marker features a fiber tip and an industrial strength ink ideal for permanent identification of packaging materials, parts or accessories. The clear, crisp marks resist fading even when subjected to varying, extreme climates. TUFF GUY™ won't rub off slick surfaces like plastics and shrink wrap.

- Marks are highly resistant to most coolants and cutting fluids
- Permanent ink writes on smooth surfaces such as metal, aluminum, steel, plastics, cardboard and more
- Marks withstand dirt, oil, grease, extreme weather conditions and even degreasing solvents
- Replaceable tips available
- 6 to 8 times the writing life of most other capillary markers of comparable size
- Drying Time: 45 seconds - 1 minute



Available Colors/Product #'s:

Color	Part #	Color	Part #
Black	44203	Red	44819
Blue	44179	White	44175
Green	44177	Yellow	44401



DYKEM® STRIKE-MARK™ is an industrial strength fast drying permanent ink marker. STRIKE-MARK™ Medium has over 12 times the writing life compared to other permanent ink markers. STRIKE-MARK™ dries in less than 10 seconds on most surfaces. Heavy-duty ink formulation resists fading, even in extreme outdoor conditions. Valve action mechanism enables a dried out tip to be re-inked even when the cap is left off for days.

- Fast Drying
- Resists fading
- Industrial strength ink
- Permanent marks will not smudge or rub off

Available Colors/Product #'s:

Fine Tip		Medium Tip*	
Color	Part #	Color	Part #
Black	33682	Black	91682
Blue	33731	Blue	91731
Green	33734	Green	91734
Red	33736	Red	91736

* Bullet and Chisel replacement tips are available for medium size markers



**MORE THAN 12 TIMES
THE WRITING LIFE
OF THE AVERAGE
INK CAPILLARY MARKER.**



action marker® INK MARKERS

The dye-based DYKEM® action marker® is the solution for your ink marker needs. This valve-action marker features a fiber tip for marking on smooth surfaces. When not in use, the clip cap makes it easy to secure the marker in your pocket or on a clip board. The 44 style features a threaded end that can be screwed into a jig or apparatus for a continuous identification application.

- Available in 2 barrel sizes
- Ink writes on smooth surfaces such as glass, aluminum, plastic, rubber, cardboard and more
- Marks will not smudge or rub off
- Replaceable tips available
- Bullet & Chisel tips are available for the 44 size
- 6 to 8 times the writing life of most other capillary markers of comparable size
- Drying Time: 45 seconds - 1 minute

Available Colors/Product #'s:

Broad (44)			Fine		
Color	Part #		Color	Part #	
Black	44003		Black	33003	
Blue	44001		Blue	33001	
Green	44004		Green	33004	
Red	44002		Red	33002	



UV MARKERS

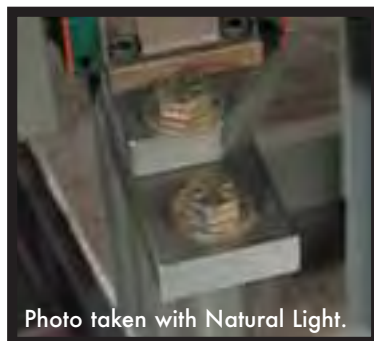


Photo taken with Natural Light.

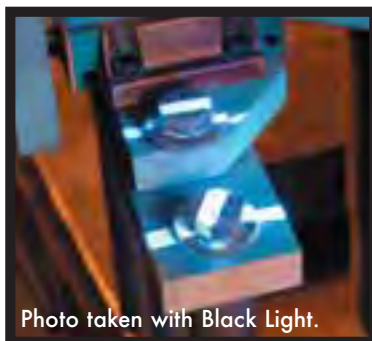


Photo taken with Black Light.

Make a mark only you will know about. DYKEM®'s UV MARKER goes on invisible but illuminates blue under a black light. The fiber tipped marker writes on virtually any nonporous surface including plastic, glass, metal and more. Great for Quality Control processes, tamper checks, tagging, ownership, anti-counterfeiting and much more.



- Marks on plastic, glass and nonporous surfaces
- Excellent for security applications
- Detectable by UV light
- Drying Time: 20 – 30 seconds

Color: Clear – Illuminates Blue under Black Light
Product #: 91195

DYKEM® HIGH PURITY markers are your answer for marking on stainless steel or any surface where degradation, contamination or other adverse effects are a concern. The formulas contain trace amounts of halogens, low melting metals and are low in chlorides. The precise formulations meet or exceed the specifications for GE Nuclear Energy, GE Aircraft Engines and the US Energy Research and Development Administration (nuclear grade).

HIGH PURITY TXP: Features a stainless steel roller ball tip and a rubber pressure bulb to control paint flow. The TXP is designed to permanently write on dirty, oily, greasy or rough surfaces. The unique design allows you to mark at any angle, upside down and even underwater. The specially formulated oil-based paint withstands extreme conditions. **Drying Time: 25 – 30 minutes.**

HIGH PURITY 44: Designed with a valve action mechanism that allows the marker tip to be re-inked, even when the cap is left off. Marker barrel is threaded so it can be secured in a jig or apparatus for continuous marking applications. Unique cap design features a clip that prevents the marker from rolling and can easily be secured to a clip board or in your pocket. **Drying Time: 45 seconds – 1 minute.**

HIGH PURITY FINE LINE: Is a lightweight valve action marker that writes fine, distinctive markings. It features a clip cap so it's easy to secure in your pocket. **Drying Time: 45 seconds – 1 minute.**

Available Colors*/Product #'s:

HIGH PURITY TXP

Medium Tip			Broad Tip		
	Black	17473		White	17464
	Blue	14213		Yellow	17144
	White	17463	Fine Tip		
	Yellow	14143		White	17460
				Yellow	14140

HIGH PURITY

Medium (44)			Fine Tip		
	Black	44404		Black	33404
	Blue	44534		Red	33301
	White	44729		White	33729
	Yellow	44916			
	Red	44301			

- Low chloride
- Ideal for welding, aircraft industries, ship/boat/marine industries, power plants and automotive plants
- Paint will not contaminate or adversely affect surface being marked



HIGH TEMP MARKERS

DYKEM® HIGH TEMP markers are specifically formulated for marking surfaces that are exposed to extreme high temperature environments. Marks should be made at room temperature and can be applied to almost any non-porous surface such as metal, glass, and ceramic. When marking on ceramics, the marks will become permanently fused to the surface after heat is applied. Certain colors can withstand temperatures up to 2000 °F (1093 °C).




HIGH TEMP TXP: Features a stainless steel roller ball tip and a rubber pressure bulb to control paint flow. The TXP is designed to permanently write on dirty, oily, greasy or rough surfaces. The unique design allows you to mark at any angle, upside down and even underwater. The specially formulated oil-based paint withstands extreme conditions. **Drying Time: 25 – 30 minutes**

HIGH TEMP 44: Designed with a valve action mechanism that allows the marker tip to be re-inked, even when the cap is left off. Marker barrel is threaded so it can be secured in a jig or apparatus for continuous marking applications. Unique cap design features a clip that prevents the marker from rolling and can easily be secured to a clip board or in your pocket. **Drying Time: 45 seconds – 1 minute**

- High temperature resistance
- Ideal for marking on glass, metal and ceramic
- Each color represents a temperature range

Available Colors/Product #'s:

HIGH TEMP TXP

		Fine Tip	Medium Tip	Temperature Range
	Black	17030	17033	2000 °F (1093 °C)
	White	17080	17083	800-900 °F (426-482 °C)
	Yellow	17060	17063	800-900 °F (426-482 °C)

HIGH TEMP

		Medium Tip (44)	Fine (44)	Temperature Range
	Black	44250	33250	2000 °F (1093 °C)
	Blue	44094	33094	2000 °F (1093 °C)
	Green	44266	33266	1800 °F (982 °C)
	White	44219	33219	1550-1650 °F (843-899 °C)
	Yellow	44424	33424	800-900 °F (426-482 °C)



BLEED-THRU MARKER

Yellow paint was applied after the Lot # was marked.



The **DYKEM® BLEED-THRU™** is a fast drying, valve action ink marker that remains visible after the mark has been painted over. It is ideal when used for fabricating metal or plastic where marks are required to bleed through a primer coat covering the marks.

Marks bleed through when painted over with oil/solvent based paints and primers. Makes permanent marks on plastic, metal, glass, ceramics, and most non-porous surfaces. It can be used to permanently identify inventory, assemblies, machines, or finished products while resisting most work related abuses or compounds.



BLEED-THRU

Color	Part #
Black	44531

- Marks bleed through most solvent based paints and primers
- Marks bleed through powder coating
- Permanent marks on most surfaces
- Can be used for identification purposes
- Chisel & bullet replacement tips are available
- Heavy duty aluminum body with large ink capacity
- Valve action mechanism prevents ink in barrel from drying when cap is left off
- Drying Time: 45 seconds – 1 minute

DYKEM® BULK PRODUCTS

The same paint and ink formulas used in **DYKEM®** markers are also available in one gallon containers. Whether you need a mark that will last or a mark you can remove, the diverse line of paint and ink formulations ensures that **DYKEM®** can meet your marking needs.

Water Removable: RINZ OFF®

Color	Part #	Container Size
Red	82106	1 Gallon
Blue	82105	1 Gallon
Green	82108	1 Gallon

Detergent Removable: SUDZ OFF®

Color	Part #	Container Size
Red	82939	1 Gallon
Blue	87938	1 Gallon
Green	82371	1 Gallon

HIGH PURITY

Color	Part #	Container Size
White	87229	1 Gallon
Black	82404	1 Gallon

HI TEMPERATURE

Color	Part #	Container Size
White	87219	1 Gallon
Black	82250	1 Gallon

ULTRAVIOLET

Color	Part #	Container Size
Clear*	82195	1 Gallon

*Clear – Illuminates Blue under Black Light



PEN COUNTER DISPLAY BOX



Display an array of DYKEM® markers with this convenient Pen Counter Display Box. This box not only showcases the variety of DYKEM® marking systems, but also allows for the display of marketing literature.

- Specially designed box for DYKEM® marking pens for display right on countertops
- Holds up to 50 sheets of marketing literature

Pen Counter Display Box

Part #

84997

PEN DEMO KIT

The DYKEM® Pen Demo Kit is an excellent way to physically demonstrate the entire DYKEM® product line of specialty markers. Perfect for sales meetings and end-user calls, the DYKEM® Pen Demo Kit comes complete with product, product descriptions and demonstration instructions.

- Specially designed box with easy to hold handle
- Each kit comes complete with SCRUBS® Hand Cleaner Towel Single Pack, metal plates, dishes, and bottles to demonstrate each marker.

Pen Demo Kit

Part #

84998



PEN DISPLAY



An easy way to add visibility to a product that is traditionally an impulse buy. The DYKEM® Pen Display is a compact point-of-purchase display with big impact. Designed to accommodate the DYKEM® marker of your choice, it's a very versatile addition to your countertop.

- Constructed with lightweight, corrugated cardboard
- Configured to hold any marker box in the DYKEM® marker line

Pen Display*

Part #

84999

*The DYKEM® Pen Display is shipped empty.

APPLICATION CHART - MARKERS

Always test surface to determine suitability.

	action marker®	BLEED-THRU	BRITE-MARK®	BRITE-MARK® H ₂ O	DALO®	HIGH PURITY	HIGH TEMP	RINZ OFF®	Strike-Mark™	SUDZ OFF®	TEXPEN®	TUFF GUY™	UV Marker
Marks on Metal	X	X	X	X	X	X	X	X	X	X	X	X	X
High Visibility	X	X	X	X	X		X	X	X	X	X	X	
Cold Surfaces	X	X	X	X	X	X		X	X	X	X	X	X
High Temperature Resistance							X						
Greasy & Oily Surfaces			X		X						X		
Galvanizing Process								X		X			
Detergent Removable										X			
Visible through Paint & Primer		X											
Water Removable								X					
Rough, Rusty Surfaces					X						X		
Wet Surfaces					X						X		
Low Chloride (Nuclear/Aircraft Certs)						X							
Black Light Visibility													X
Fast Drying (< 10 sec.)									X				
Resistant to Coolants & Cutting Fluids												X	
Marks on Wood	X		X	X	X				X		X	X	
Marks on Plastics			X	X	X				X		X	X	X
Marks on Glass & Ceramics	X	X	X	X	X	X	X	X	X	X	X	X	X
Marks on Concrete & Stone					X						X		
Marks on Paper	X		X	X					X			X	X
Marks on Cardboard	X		X	X					X			X	X
Marks on Rubber	X		X		X				X		X	X	X



Cling Surface

CLING has built a solid reputation for quality specialty chemical products for industrial, farm and marine use since 1896, with the formulation of CLING belt dressing. The tradition of quality continues as part of ITW DYKEM to provide you with a range of quality products formulated to meet your needs today and tomorrow.

CLING BELT DRESSING

Product	Product #	Container Size
Belt Dressing (Golden)	10095	Aerosol 16 oz

CLING LUBRICANTS & OILS

Product	Product #	Container Size
MOOVIT™ Penetrant	12090	Aerosol 16 oz
Water Soluble Cutting Oil	26090	Bottle 1 Gallon
Water Soluble Cutting Oil	26091	Pail 5 Gallons
Air Tool Oil	15000	Spout Btl 1 Pint
Air Tool Oil	15002	Bottle 1 Gallon
Moly Open Gear/Wire Rope	11030	Aerosol 16 oz
Moly Open Gear/Wire Rope	11032	Pail 5 Gallons
Moly Chain/Cable Oil	11039	Aerosol 16 oz
Red Grease	11045	Aerosol 16 oz

SPRAY BELT DRESSING

Stops Slipping & Squeaking
Equalizes Pressure
Reduces Vibrations
Improves Bearing & Belt Life

OPEN GEAR AND WIRE ROPE OIL

Penetrates
Adheres Under High RPMs
Operating Temperature to 400°F

MOOVIT™ SPRAY PENETRATING LUBRICANT

Frees Rusted/Corroded Parts
Excellent Lubricant
Removes Rust

WATER SOLUBLE CUTTING OIL

Multi-Purpose
For Machining/Grinding of
all Metals

SPRAY RED GREASE

Multi Purpose Grease
100% Waterproof
Excellent Lubricity
Not Affected By
Acids/Alkalis/Salts



SCRUBS®

Hand Cleaner Towels

Always Blue™

SCRUBS® Hand Cleaner Towels

The unbeatable cleaning power of SCRUBS® Hand Cleaner Towels remains an industry leader. The patented, citrus-based formula is combined with a tough, textured towel to loosen, dissolve and absorb dirt and grease leaving your hands truly clean with no rinsing required. The effectiveness of pumice soap in a one-step, premoistened towel allows you to use SCRUBS® Hand Cleaner Towels *anywhere, anyplace, anytime®*.

**Remove Stains
and Marker
from your hands!**



Product	Part #	Container Size
SCRUBS in-a-Bucket®	42272	Bucket/Towels 72 Ct
SCRUBS® Hand Cleaner Towels	42230	Container/Towels 30 Ct.
SCRUBS in-a-Pack™	42210	Pack/Towels 10 Ct.
SCRUBS® Single Pack	42201	Box/Towel 100 Ct.

STAINLESS STEEL CLEANERS

Use Dymon's Stainless Steel Cleaner Sprays or Towels to clean, polish and preserve the high luster of stainless steel finishes.

- Quick, convenient and effective
- Cleans and polishes
- Restores original brightness
- Restores high luster

Removes:

- Spot Marks
- Film
- Fingerprints
- Grease
- Water Marks

Use On:

- Stainless Steel
- Chrome
- Aluminum

Product	Part #	Container Size
Stainless Steel Cleaner	07920	20 oz. Aerosol
Stainless Steel Cleaner & Polish	20920	20 oz. Aerosol
Orange Stainless Steel Cleaner	34520	20 oz. Aerosol
Stainless Steel Cleaner Towel	91901	Single Pack Towel
Stainless Steel Cleaner Towel	91930	30 ct. Towel Container
Stainless Steel Cleaner Towel	91956	50 ct. Towel Container



NATURAL FORCE® DEGREASING SYSTEM



NATURAL FORCE® degreaser is heavy duty citrus power in a complete system for professional applications. Each delivery method: foaming, jelled, solvent blast or premoistened towel – is specifically formulated to solve your degreasing needs.

Jelled

- Maximum contact time
- No vertical runoff

Foaming

- Large surface coverage
- Safe for most washable surfaces

Solvent Blast

- Super concentrated formula
- Attacks grease on contact

Degreaser Towels

- No dripping or overspray
- Provides controlled application
- One-step degreaser
- Safe for most washable surfaces

Product	Part #	Container Size
Natural Force® Jelled	13620	20 oz. Aerosol
Natural Force® Foaming	36120	20 oz. Aerosol
Natural Force® Solvent Blast	37620	20 oz. Aerosol
Natural Force® Degreaser Towels	90601	Single Pack Towel
Natural Force® Degreaser Towels	90630	30 ct. Towel Container
Natural Force® Degreaser Towels	90656	50 ct. Towel Container

STEEL BLUE®

The Layout Fluid you've trusted to get the job done for over 80 years.
DYKEM® STEEL BLUE® is still the best in the business.

Machine shop operators depend on DYKEM® Layout Fluids to scribe sharp, clear, precise lines. When applied, our layout fluids provide a uniform deep color that prevents glare and dries in minutes. All DYKEM® Layout Fluids create an extremely thin film which adds practically no thickness to the work piece and remains flexible without cracking and chipping.

- Toluene-Free
- Provides a thin film without cracking or chipping
- Reveals defects and pinholes in a variety of surfaces
- Reduces eyestrain
- Allows scribing of sharp, clear, precise lines
- Dries in minutes



STEEL BLUE®

Part #	Product	Container Size
80000	STEEL BLUE®	Aerosol 16 oz.
80200	STEEL BLUE®	Felt Tip Applicator 2 oz.
80300	STEEL BLUE®	Brush-In-Cap 4 oz.
80400	STEEL BLUE®	Brush-In-Cap 8 oz.
80600	STEEL BLUE®	Bottle 930 mL
80700	STEEL BLUE®	Bottle 1 gallon
80800	STEEL BLUE®	Pail 5 gallons



STEEL RED

Part #	Product	Container Size
80096	STEEL RED	Aerosol 16 oz.
80296	STEEL RED	Felt Tip Applicator 2 oz.
80396	STEEL RED	Brush-In-Cap 4 oz.
80496	STEEL RED	Brush-In-Cap 8 oz.
80696	STEEL RED	Bottle 930 mL
80796	STEEL RED	Bottle 1 gallon
80896	STEEL RED	Pail 5 gallons

DYKEM® REMOVER & CLEANER is the preferred solution for all surface preparation, removal and dilution of DYKEM® STAINING COLORS and Layout Fluids. It has been proven that layout fluids and stains adhere better to surfaces that are prepared with this product and the formula is toluene-free for workers' safety.



- Prepares metal surfaces
- Dries in minutes
- Does not contain toluene or chlorinated solvents
- Works great for flushing out lines and nozzles

Product	Part #	Container Size
REMOVER & CLEANER	82038	16 oz Aerosol
REMOVER & CLEANER	82638	930 mL Bottle
REMOVER & CLEANER	82738	1 Gallon Bottle
REMOVER & CLEANER	82838	5 Gallon Pail
REMOVER & CLEANER	82838	55 Gallon Drum

FOUNTAIN BRUSH & BOTTLE



DYKEM®'s Fountain Brush & Bottle consists of a soft hair brush with a hollow handle attached to a squeezable bulb. No redipping is required, and it allows for delicate to heavy flow depending on your desired application.

Product	Part #	Container Size
* Fountain Brush & Bottle	89157	5 oz. Bottle

* Container is shipped empty

- Soft-hair brush
- Squeezable bulb
- 5 oz. non-breakable polyethylene bottle
- Cap will not "freeze" to bottle

CROSS CHECK™

DYKEM® CROSS-CHECK™ provides a convenient visual method for identification of vibratory loosening or tampering in nuts, bolts, fasteners, and assemblies. CROSS-CHECK™ provides warranty protection against tampering. Marks will be easily broken if parts are tampered with or become loose. Highly visible under ambient light and fluorescent under UV light. Excellent adhesion to metal and other substrates.

- Tamper Proof Torque Mark
- Safe for most surfaces
- Highly visible
- Excellent adhesion
- Visually detects loose nuts & bolts
- Provides warranty protection



Unbroken Seal

Part #	Container Size
83314	1 oz. (29.5mL) tube



Broken Seal



HI-SPOT

Hi-Spot is an intensely blue, soft, uniform paste that spreads easily and evenly to show high spots on bearings. A thin coating may be left on the surface day in and day out, and will not dry. The film remains pliable and transferable and in condition for months.

- Non-drying
- Non-hardening
- Transfers from one surface to another
- Saves time and money in surface scraping work



Product	Part #	Container Size
Hi-Spot Blue	83307	0.55 oz. Tube
Hi-Spot Blue	83507	14 oz. Can

STAINING COLORS

**We're more than just Layout Fluid.
Check out our Staining Color options.**

DYKEM® STAINING COLORS provide quick identification on a variety of component parts. These stains adhere without flaking and provide a thin mark which adds virtually no thickness to the work piece material. DYKEM® STAINING COLORS are easily applied by brushing or spraying and dry quickly to the touch. Transparent, Opaque, Temporary and Fluorescent Stains are available.



STAINING COLORS

Opaque Stains

- Perform well on light and dark tinted metals
- Provide excellent hiding/coverage properties and opacity
- Thickness can be adjusted by adding **DYKEM® Remover & Cleaner**

Transparent Stains

- Perform best on light tinted, polished metals
- Will not settle or separate

RINZ OFF® Water Removable

Temporary Stains

- For use on non-treated, bare metal surfaces
- Easily removed with water and leave no harmful residue
- Does not require a solvent for removal

SUDZ OFF® Detergent Removable

Temporary Stains

- Perfect for staining bare metal surfaces which require water-resistance
- Removable with alkaline detergent (pH 10 or higher)
- Does not require a solvent for removal

* Note: Drying times depend on film thickness. Film thickness will vary with method of application.

* CAUTION: Surface tests should be run to determine Staining Color suitability.



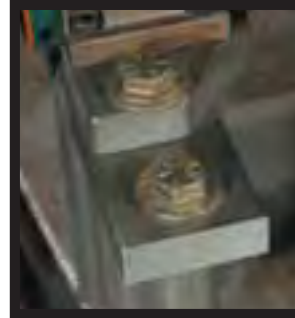
- Permanently or temporarily identify parts, inventory, works-in-progress, tools, assemblies or finished goods
- Permanent stains resist most work related materials such as oils, moisture, grease, cutting fluids and more
- Applies easily by spraying, brushing or stamping
- Dries within minutes*



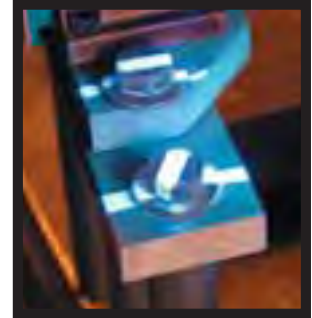
Yellow Fluorescent Stain
Natural Light



Yellow Fluorescent Stain
Black Light

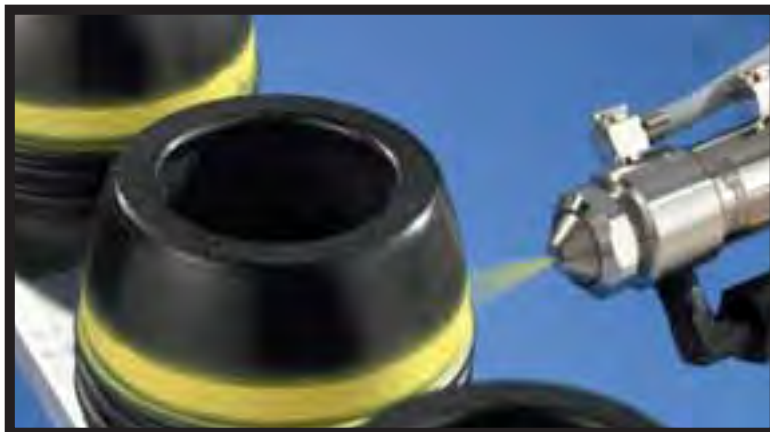


Clear Fluorescent Stain
Natural Light



Clear Fluorescent Stain
Black Light

- Fluorescent Stains**
- Display a bright, fluorescent color under black lighting
 - Detectable by optical sensors in automated processing system



EFD MicroMark® Spray Systems

The MicroMark® is a spray marking system from EFD Inc. It is a compact marking system that produces round patterns and stripes on product in an assembly line setting. **DYKEM®** transparent stains are recommended for use with this system for best results.

For application assistance or a no-charge evaluation system in the USA, call 800-556-3484.

For EFD sales and service in over 30 countries, contact EFD USA or go to: www.efd-inc.com

STAINING COLORS

Opaque Stains

Color	2 oz Applicator	8 oz. Brush-In-Cap	12 oz. Aerosol*	1 Gallon Bottle	5 Gallon Pail
Black	81224	81424	—	81724	81824
Dk. Blue	81278	81478	81078*	81778	81878
Blue	81225	81425	—	81725	81825
Lt. Blue	81214	81414	—	81714	81814
Gray	—	—	—	81776	81876
Dk. Green	81206	81406	—	81706	81806
Lt. Green	81208	81408	—	81708	81808
Orange	81213	81413	—	81713	81813
Pink	81260	81460	—	81760	81860
Purple	81263	81463	—	81763	81863
Red	81291	81491	81091*	81791	81891
Violet	81219	81419	—	81719	81819
White	81227	81427	81027*	81727	81827
Yellow	81205	81405	81030*	81705	81805

* Not for sale in the state of California.

Transparent Stains

Color	8 oz. Brush-In-Cap	1 Gallon Bottle	5 Gallon Pail
Black	81431	81731	81831
Dk. Blue	81417	81717	81817
Green	81465	81765	81865
Lt. Green	—	81766	81866
Orange	81462	81762	81862
Purple	81404	81704	81804
Red	81496	81796	81896
Yellow	81451	81751	81851
Brown	—	81757	81857

- Perform best on light tinted, polished metals
- Will not settle or separate

Fluorescent Stains

Color	1 Gallon Bottle	5 Gallon Pail
Yellow*	81718	81818
Clear*	8215	—

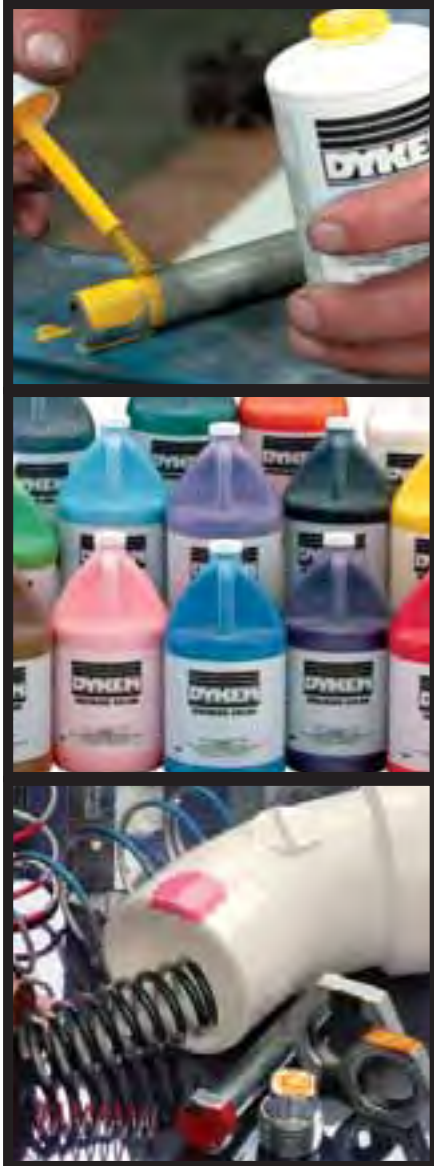
- Yellow Fluorescent Stains display a bright fluorescent yellow color under a black light
- Clear Fluorescent Stains display a bright fluorescent blue color under a black light

RINZ OFF® Stains

Color	1 Gallon Bottle
Dk. Blue	82105
Green	82108
Red	82105

SUDZ OFF® Stains

Color	1 Gallon Bottle
Dk. Blue	87938
Green	82371
Red	82939



PRODUCT NUMERICAL INDEX

0702018	1703012	3373410	4417512		8176524
	1703312	3373610	4417712	8080012	8176624
1009524	1706012		4417912	8089612	8177624
	1706312	3452018			8177824
1102524	1708012		442039	8102724	8179124
1103024	1708312	3612018	4421912	8103024	8179624
1103224	1746312		4425012	8107824	
1103924	1747312	3762018		8109024	8180424
1104524			4430112		8180524
	2092018	400013	443718	8140424	8180624
1209024		400023		8140524	8180824
	2605024	400033	444019	8140624	8181324
1362018	2605124	400043	4440412	8140824	8181424
	2609024	400063	4442412	8141324	8181724
1414312	2609124	400073		8141424	8181824
1421312	260136	400083	4453120	8141724	8181924
	260146	400093	4453412	8141924	8182424
1500024	260236	400103		8142424	8182524
1500224	260246	400143	446948	8142524	8182724
	260336	400163		8142724	8183124
160105	260346	400453	447098	8143124	8185124
160135	260436		4472912	8145124	8185824
160145	260446	410013	447578	8146024	8186024
160185	260636	410023		8146224	8186224
160205	260646	410033	4481912	8146324	8186324
160235	260836	410043		8146524	8186524
160245	260846	410063	4491612	8147824	8186624
160285	2609016	410083	449388	8149124	8187624
160305		410103	449398	8149624	8187824
160335	261036	410143	449858		8189124
160345	261046	410163		8170424	8189624
160385		410453	8000012	8170524	
160435	3300111		8009612	8170624	8191824
160445	3300211	4220117		8170824	
160405	3300311	4221017	8020012	8171324	8203820
160485	3300411	4223017	8029612	8171424	
160605		4227217		8171724	8210524
160635	3309412		8030012	8171824	8210624
160645	3321912	4400111	8039612	8171924	8210824
160685	3325012	4400211		8172424	8219524
160805	3326612	4400311	8040012	8172524	
160835	3340412	4400411	8049612	8172724	8237124
160845	3342412			8173124	
160885		441058	8060012	8175124	8263820
161005	3368210	441068	8069612	8175724	8273820
161035		441088		8176024	
161045	337297	441098	8070012	8176224	8283820
161085	3373112	441468	8079612	8176324	8293820

PRODUCT NUMERICAL INDEX

8293924	840073	841054	911058	916024	9195618
	840083	841064	911068	916034	919388
8330721	840093	841074	911088	916044	919398
8331421	840103		911098	9168210	919858
	840193	849999	911468	916948	
8350721	840223		9119511		
	840503	8793824		9173110	
840013	840513		913718	9173410	
840023		8915720		9173610	
840033	841014		914254	917578	
840043	841024	9060118	914264		
840053	841034	9063018	914274	9190118	
840063	841044	9065618	914284	9193018	

PRODUCT ALPHABETICAL INDEX

action marker® 44 & Fine	11
-	
BLEED-THRU	13
BRITE-MARK® 40, Fine, Medium	3
BRITE-MARK® H ₂ O	4
BRITE-MARK® BROAD	4
BRITE-MARK® Blister Carded Markers	4
Bulk Products	13
-	
CLING Surface Products	16
CROSS CHECK	21
-	
DALO® Broad & Medium	4
-	
EFD MicroMark®	23
-	
Fluorescent Stains	23, 24
Fountain Brush & Bottle	20
-	
HIGH PURITY Fine & 44	12
HIGH PURITY TXP Fine, Medium, & Broad	8
HIGH TEMP Fine & 44	8
HIGH TEMP TXP Fine, Medium, & Broad	8
Hi-Spot Blue	20
-	
Layout Fluids	19
-	
Opaque Stains	23, 24
-	
Pen Counter Display Box	14
Pen Demo Kit	14
Pen Display	14
-	
REMOVER & CLEANER	20
RINZ OFF® Stains	23, 24
RINZ OFF® Medium, 44, & 1 Gallon	7, 8
-	

SCRUBS® Hand Cleaner Towels	16
Staining Colors	22, 23, 24
STEEL BLUE® Layout Fluid	19
STEEL RED Layout Fluid	19
STRIKE-MARK™ Fine & Medium	10
SUDZ OFF® Stains	23, 24
SUDZ OFF® Medium, 44, & 1 Gallon	7, 8
-	
TEXPEN® Fine, Medium & Broad	4
TEXPEN® Blister Carded Markers	4
Transparent Stains	23, 24
TUFF GUY™	9
-	
UV Marker	11

Ready to order **DYKEM®** products? Call our customer service department.

1.800.443.9536
913.397.9889

Need an MSDS?

MSDS sheets are available online
for all product numbers.

www.dykem.com

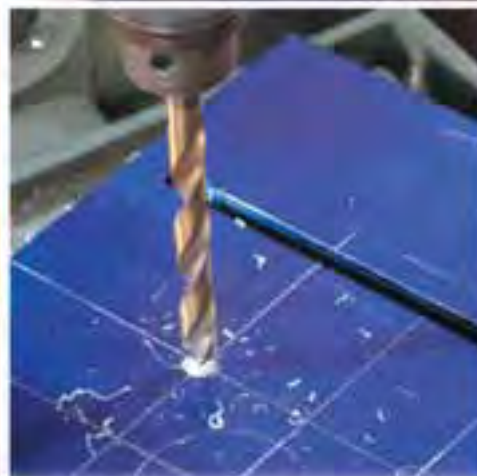
ITW Dymon
805 E. Old 56 Highway
Olathe, KS 66061

DYKEM®

Brand



Distributed By:



ITW Dymon

805 E. Old 56 Highway • Olathe, KS 66061 • Toll Free: 800.443.9536 • Tel: 913.397.9889 • Fax: 913.397.8707 • www.dykem.com

SCRUBS® • DYKEM® • mark-tex • Dymon

Brand

Brand

Brand

Brand

LI319
090805